

PERSONAL NAVIGATOR

Sunrise: 6:01 a.m. Sunset: 6:59 p.m.
Evening Attire: Formal Attire

Sunday: Partly Cloudy High: 75°F/24°C
Monday: Partly Cloudy High: 77°F/25°C

SUNDAY, APRIL 15, 2012


DAY AT SEA



New to Disney Cruise Line,
"Disney's Aladdin - A Musical Spectacular"

A fast-paced, musical comedy based on the beloved animated film.

Aladdin, the "street rat" of Agrabah, meets a wise-cracking Genie, battles the evil Jafar, and falls in love with the beautiful and spirited Princess Jasmine. Disney storytelling at its best.

 Assistance available at the entrance to the Walt Disney Theatre 30 minutes prior to show time.



WALT DISNEY THEATRE

Decks 3 & 4 Forward

3:00, 6:15 PM & 8:30 PM

Disney FANTASY Fun Facts

Tonnage: 130,000 Gross Tons

Height: 216 Feet

Length: 1115 Feet

Important Dates

Name Announcement: March 10, 2009

Steel Cutting: March 16, 2010

Keel Laying: February 11, 2011

Delivery: February 9, 2012

Places of Interest

Below are places of interest and approximate times that we will be passing during our voyage to Grand Cayman today:

1:00 a.m. - Port Everglades - Starboard Side

2:15 a.m. - Miami - Starboard Side

7:00 a.m. - Tennessee Reef - Starboard Side

7:00 p.m. - Cuba landfall - Port Bow
Cuba will be on our Port Side for the remainder of the evening.



CAPTAIN'S RECEPTION

Enjoy an exclusive photo with Captain Marco, meet some of the ships officers and enjoy a cocktail. With live music provided by Fine Whines.

5:15 & 7:30 p.m.
Lobby Atrium,
Deck 3, Midship

Don't Miss:

Disney Animation: Illusion of Life - Creating a Character

9:45 a.m., D Lounge, Deck 4, Midship

Go behind the scenes at Walt Disney Animation Studios as Walt Disney himself talks about his most famous characters, then learn the basic techniques of drawing Mickey and Donald in this fun and interesting enrichment program.

Disney's Behind the Scenes - Concept to Stage

2:00 p.m., Buena Vista Theatre (18+), Decks 4 & 5 Midship

Join Broadway-bound Disney Songwriters Alan Zachary & Michael Weiner for a look behind the scenes of what it takes to bring a show from concept to stage, including the newest shows onboard the Disney Fantasy: A Fantasy Come True and An Unforgettable Journey.

Longest Drive

3:15 p.m., Golf Simulator (18+), Deck 13, Aft

Challenge your fellow cruisers, and the Golf Simulator, and see who has the longest drive!

Family Cabaret: David Williamson

7:30 p.m., The Tube, Deck 4, Aft

Featuring the Comedy & Magic of David Williamson, as he entertains the entire family in this fun-filled show.



Visit Shutters for all your photographic needs, from Digital cameras, batteries, binoculars and accessories. All photos taken during this cruise will be available for viewing on our photo kiosks at Shutters Digital, as well as in your photo folder at Shutters, Deck 4, Midship.

DINNER MENU

Animator's Palate: Pacific Rim Cuisine
Enchanted Garden: Continental Market
Royal Court: French Dinner Menu

DRINK OF THE DAY

Mai Tai (Alcoholic)
Coco Bali (Non Alcoholic)

IMPORTANT NUMBERS

Fire/Security: 7-3001
Medical Emergency: 7-3000
Health Center: 7-1923

FAMILY ACTIVITY HIGHLIGHTS

WAKE UP WITH DISNEY JUNIOR

D Lounge, Deck 4, Midship - 9:00 a.m.
What happens when you experience unlimited fun with your favorite Disney Junior shows? An exciting dance party designed especially for pre-schoolers ages seven and under.



JACK-JACK'S INCREDIBLE DIAPER DASH

Lobby Atrium, Deck 3, Midship - 11:00 a.m.
Calling all baby cruisers! The Disney Fantasy's babies take to the mat to see who's the fastest crawler of the seven seas!

PORT & SHOPPING SHOW

Buena Vista Theatre, Decks 4 & 5 Midship - 11:30 a.m.
Join your Port & Shopping Guides Johan & Marissa to learn about the incredible tax and duty free shopping in our ports of call this cruise. FREE charm bracelet for all in attendance!

FAMILY CRAFTS - SCRAPBOOKING

D Lounge, Deck 4, Midship - 12:15 p.m.
Start creating and collecting your cruise memories at this scrapbooking session. Your Cruise Staff will be on hand with a special gift for all attendees.

THE QUEST

D Lounge, Deck 4, Midship - 1:15 p.m.
Enjoy the wildest and wackiest scavenger team event on the seven seas!



ANYONE CAN COOK

D Lounge, Deck 4, Midship - 2:15 p.m.
From our galley to yours; join our chefs as they show you how to prepare delicious dishes. Today's menu: Apple Strudel.

DIAMOND & GEMSTONE SEMINAR

The Tube, Deck 4, Aft - 2:30 p.m.
Join your Port & Shopping Guides Johan & Marissa to learn about exotic Caribbean Gemstones, Tanzanite & Diamonds. Free gemstone pendant for all in attendance!

FORMAL NIGHT AFTER PARTY

D Lounge, Deck 4, Midship - 9:45 p.m.
Join your Cruise Staff and "The Dreamers" as we continue the party, with special appearances from the world famous Disney characters.



ADULT ACTIVITY HIGHLIGHTS

SENSES SPA SEMINARS

Sunrise Stretch - Senses Fitness Center 7:00 a.m.
Fab Abs - Senses Fitness Center 7:30 a.m.
Body Sculpt Boot Camp (Fee Applies) - Senses Fitness Center 9:00 a.m.
Seminar: Introduction to Acupuncture - Outlook 10:15 a.m.
Seminar: Detox for Health & Weight Loss - Outlook 11:00 a.m.
Seminar: How to Increase Your Metabolism - Outlook 1:00 p.m.
Fitness Frenzy (13-17 yrs) (Fee Applies) - Senses Fitness Center 3:00 p.m.
Group Cycling - Senses Fitness Center 4:00 p.m.



TASTING SEMINARS

Champagne Tasting (21+) - Ooh La La, 12:00 p.m.
Wine Tasting (21+) - Meridian, 1:30 p.m.
Martini Tasting (21+) - Ooh La La, 3:00 p.m.
Please make reservations for tastings at Guest Services for a nominal fee. Tasting Seminars are only for Guest's 21 and Older.

CLUB
18*21

MIX AND MINGLE

Cove Cafe, Deck 11, Forward, 12:15 p.m.

GIANT JENGA CHALLENGE

O'Gills Pub, Deck 4, Aft, 5:00 p.m.

MIXER EVENT

O'Gills Pub, Deck 4, Aft, 10:00 p.m.



ESPN DREAM TEAM DRAFT DAY - BASEBALL

O'Gills Pub, Deck 4, Aft - 10:15 a.m.
Play ball! Join the "Commissioner" and engage in this interactive fantasy baseball draft unlike anything you've ever seen! Can YOU draft the greatest baseball team of All-Time?

ART OF THE THEME SHOW TOUR

Meet at Meridian, Deck 12, Aft - 4:00 p.m. (Repeated throughout the cruise)
A walking tour that highlights the ship's design of Disney culture, theming and artistry.

LIVE PIANO MUSIC WITH CHARLIE REUTER

La Piazza, Deck 4, Aft - 7:30, 9:45 & 10:45 p.m.
Join Charlie Reuter in La Piazza this evening as he plays live for your listening pleasure, including a special "Swinging and Sailing" set at 10:45 p.m. with Rat Pack inspired tunes from Frank Sinatra, Dean Martin and Sammy Davis Jr.

KICKSTART JACKPOT BINGO

D Lounge, Deck 4, Midship

Card Sales - 10:45 a.m. Game Starts - 11:00 a.m.

Join us for our first session of Jackpot Bingo, with four CASH prizes to be won. Everyone in attendance will receive a FREE bingo card for one of the four cash prize games. Plus your chance to win a Diamond Pendant, courtesy of your Shopping Guides Johan & Marissa.

SENSES SPA JACKPOT BINGO

**D Lounge,
Deck 4, Midship**

Card Sales - 3:45 p.m.

Game Starts - 4:00 p.m.

Four CASH prizes up for grabs plus great spa prizes to be won, including a mini facial and massages, courtesy of the Senses Spa and Salon.



YOUTH ACTIVITIES HIGHLIGHTS

DINE & PLAY

A convenience for families dining at 8:15 p.m., our Youth Activities Counselors will be available at 9:15 p.m. at the entrance of Royal Court, Enchanted Garden and Animator's Palate dining rooms to bring registered children to join the fun in the Youth Activity areas.

CLUBHOUSE KIDS

Is a structured play time offered during secured programming, and is recommended for children ages 3-7. During Clubhouse Kids time in the Oceaneer Club Counselors will be able to interact and encourage the youngest cruisers in specific activities, ensuring they are engaged.



Deck 5 Midship (7-5864) 9:00 a.m. - 11:30 p.m.

OPEN HOUSE

8:00 - 9:00 a.m.
Your chance to see our toddler space, It's A Small World Nursery.



Deck 5 Midship (7-1440) 8:00 a.m. - 12:00 Mid.

TOY STORY BOOT CAMP

11:00 a.m.
Ten-hut! The Green Army Men are holding a boot camp and your junior cruiser is invited to join in the fun.

ONCE UPON A TIME

7:30 p.m.
Join Beverley the Bookmaker for a magical, musical story time featuring a Disney Princess!



Deck 5 Midship (7-1445) 9:00 a.m. - 12:00 Mid.

STITCH'S ADVENTURE SQUAD

9:30 a.m.
Stitch, everyone's favorite alien, is making an appearance to share some of his mischievous games and activities.

GET THE HOOK

3:00 p.m.
A villainous villain has stolen Captain Hook's prized golden hook. Become a member of the Top Detective Agency and help solve the clue's to retrieve Hook's hook.

Deck 13 Midship (41-14426) 10:00 a.m. - 1:00 a.m.

MIRROR, MIRROR GAME SHOW

11:45 p.m., D Lounge, Deck 4, Midship
It's time to play the fairest game show of them all, Mirror, Mirror. Whether you're Happy, Grumpy or even Dopey you'll love competing for all the apples!



Entrance on Deck 4 Forward (7-9418)
10:00 a.m. - 2:00 a.m.

ZOMBIFIED

11:00 a.m.
Help the Production Assistant to rally the teens and complete this big shot Hollywood production.

ANYONE CAN COOK - PIZZA

2:30 p.m.
Anyone can cook as we work together to create some of our favorite treats.

BUENA VISTA THEATRE

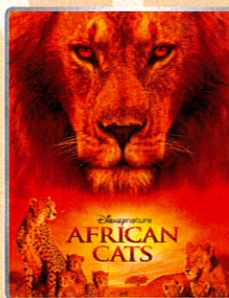
Today's Movies



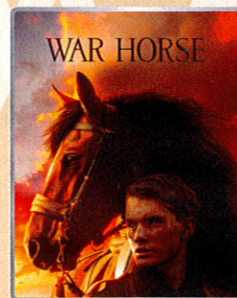
9:00 a.m.
Run Time: 1 hr 43 mins
Rating: G



3:15 p.m.
Run Time: 1 hr 40 mins
Rating: PG



5:45 & 8:15 p.m.
Run Time: 1 hr 29 mins
Rating: PG



10:15 p.m.
Run Time: 2 hrs 26 mins
Rating: PG-13



Calling all baby cruisers!
The Disney Fantasy's babies take to the mat to see who's the fastest crawler of the seven seas!

**Lobby Atrium,
Deck 3, Midship**
11:00 a.m.



ADULT CABARET

Featuring the Comedy & Rhythm of Buckets N Boards, as they entertain you in this adult Cabaret-Style show.

**The Tube (18+),
Deck 3, Midship**
10:15 p.m.

YOUTH ACTIVITIES OPEN HOUSE

Open House is an opportunity for all to come and participate in a variety of exciting activities and free time in the Oceaneer Club, Lab, Edge and Vibe throughout the cruise. During these times secured programming will still be offered in the other venue for those looking to check their children into care.

MORE TO ENJOY WHILE ONBOARD

ONBOARD AIRLINE CHECK IN

If you would like to have your boarding passes printed for you onboard and have your luggage taken to the airport, register by Wednesday. If you have Disney Cruise Line airport transfer to Orlando International Airport and fly with one of the participating airlines. Please stop at Guest Services, Deck 3, Midship.



DISNEY VACATION CLUB® GROUP PREVIEW

Want to learn more about taking magical vacations year after year? Please see a Disney Vacation Club representative on Deck 4, Mid-Ship, or call 7-2805 from your stateroom phone for more information about our interactive group presentation.



PORT & SHOPPING SHOW

Join your Port & Shopping Guides Johan & Marissa to learn about the incredible tax & duty free shopping in Grand Cayman, Costa Maya & Cozumel. All in attendance will receive a **FREE** Caribbean Charm Bracelet & be entered to win a Diamond Pendant! Buena Vista Theatre, Decks 4 & 5, Forward at 11:30 a.m.



ACUPUNCTURE

Acupuncture allows your body to heal itself. Acupuncture is comforting to the mind and body and has been proved to be effective over 100 conditions. \$150 and 60 minutes

Call Senses Spa & Salon, 7-1465

SILENT ART AUCTION

Your chance to take part in our Silent Art Auction today. Vista Gallery, Deck 4, Midship.

Preview
10:00 a.m. - 12:00 p.m.
Auction
1:00 - 4:00 p.m.



FORMAL PORTRAITS TONIGHT!

Moon, Mural & Bow - Six guests maximum please
Grand Staircase & Minnie Statue - Groups accommodated

5:00 p.m. - 6:00 p.m.
7:15 p.m. - 8:30 p.m.
9:30 p.m. - 10:30 p.m.

**Please note that photos are available for viewing on our interactive photo kiosks approximately five hours after being taken and are only available for purchase during this cruise.*

SURF @ SEA

\$0.75 per minute, or save money by buying blocks of time. \$55.00 for 100 minutes, \$100.00 for 250 minutes and \$150.00 for 500 minutes. Wireless information sheets are available at Guest Services, Deck 3, Midship.

Please note: Due to satellite connectivity, onboard internet service will be noticeably slower than you may be accustomed to and may at times be interrupted or unavailable.

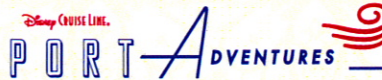
ON DEMAND TV

Watch Disney movies, Hollywood features, ABC Shows, and even captioned content, plus much more "On Demand" for **FREE** in the comfort of your stateroom! Bookmark your movie and come back to watch it later. Press MENU on your stateroom television remote control, and follow the prompts.



PLAN YOUR NEXT CRUISE TODAY

Book your next cruise today for the best availability and pricing. You'll save 10%, receive up to a \$200 onboard credit, and pay a reduced deposit! Tune to Channel 8 on your stateroom TV for details, visit the Future Cruise Sales Desk, Deck 4 Midship, or call 7-2848.



Limited spaces available for our most popular tours, so visit the Port Adventures Desk today to reserve your place. Why not explore the Chacchoben Mayan Ruins in Costa Maya, an awe-inspiring reminder of this fascinating civilization. For the families, we offer Dolphin experiences in Grand Cayman, Costa Maya and Cozumel, so why not let this cruise be the time to enjoy this once in a lifetime experience.

SHOPPING

MILLION DOLLARS DIAMONDS TRUNK SHOW SEMINAR

Hosted by "Diamond Jeff" from Sofia Fiori. 3 million dollars of diamonds were brought on board and you can view and purchase these amazing stones. Enjoy a short, fun, and fascinating seminar about Sophia Fiori red carpet events and some highlights on the history of the most romantic stone on earth. From the science & discovery a million years ago to diamonds worn by Elizabeth Taylor, Marilyn Monroe to how they've become the ultimate expression of love and a staple in your jewelry wardrobe today. Join "Diamond Jeff" for 30 minutes and walk away with exciting stories to tell your dinner friends.
10:30 a.m. in Ooh La La, Deck 4 Aft.

BIBBIDI BOBBIDI BOUTIQUE

Your princess's smile lasts a lifetime. The Bibbidi Bobbidi Boutique gives your princess Pixie Dust and courage. Fairy Godmother has selected her best trainees to make fairy tale wishes a reality. The Boutique is located on Deck 5, Midship, across from the Port Adventures Desk. Call ext.9438 or stop by to make a reservation.

DISNEY CRUISE LINE EXCLUSIVE BOXED JEWELRY

Today only, starting from \$29 the perfect gift for friends and family at home! Available in Whitecaps, Deck 3, Forward

FANTASY AND INAUGURAL SAILING

Check out the amazing array of products from baseball caps, pins to t-shirts available in Sea Treasures, Mickey's Mainsail and Whitecaps, Deck 3, Forward.

WHOZITS AND WHATZITS

It's your next door shop while enjoying the sun and the pool. Come and visit us for all your AquaDuck souvenirs, swim wear and accessories! Deck 11, Midship, available from 10:00 a.m. to 12:00 and 1:00 to 4:00 p.m.

QUACKS

It's the place to go for this day at sea! Check out our outdoor station with these new and great value t-shirts, and make them part of your souvenirs for this cruise! Available from 10:00 a.m. to 4:00 p.m. on the main pool area on Deck 11, Midship.

Due to port regulations, when the ship is docked, the stores will remain closed.

DF 002 4 15 2010 DISNEY

IMPORTANT INFORMATION

Security Notice

All Guests (including children) who wish to disembark the ship are required to present their Key to the World card at the gangway. A photo ID is also required for those Guests who are 18 years of age or older. Guests under the age of 18 are required to have a Parent, Guardian or other responsible adult sign an authorization form at the time it is given out if they wish to go ashore unaccompanied. Authorization forms are available at the gangways and Guest Services.

Please Note:

Please remember to use plenty of sunscreen and mosquito repellent when venturing ashore.

Cold and Flu Reminder

Please wash hands frequently and thoroughly, particularly before meals. Contact the Health Center by dialing 7-1923, should anyone in your party become ill.

Corridor Quiet Hours

As a courtesy to all our Guests, please recognize quiet hallway hours from 10:00 p.m. til 8:00 a.m.

Inclement Weather

For the safety of all Guests, outdoor events may be changed due to unforeseen weather conditions.

Environmental Message

With Disney's commitment to the Environment, please refrain from throwing anything over the Ship's side. Thank you!

No Reserved Seats Policy

As a courtesy to all our Guests, we kindly advise that the saving of seats is not permitted in the Walt Disney Theatre, and the saving of the sun loungers is not permitted on Deck 11, 12, and 13. Items left unattended will be returned to lost and found at Guest Services, Deck 3 Midship.

Smoking

For the comfort of our guests the following areas are designated as Smoking areas: - Promenade Deck (Deck 4), smoking is permitted Port Side, Aft only from 6:00 p.m. to 6:00 a.m.
- Currents - Deck 13, Forward, Port Side.
- Meridian Bar - Deck 12, Aft, Port Side, outside.
- Smoking is permitted on stateroom verandahs. Smoking is prohibited inside all guest staterooms. Guests found smoking in their staterooms will be charged a \$250 stateroom recovery fee.

Walt Disney Theatre

Theatrical performances may use artificial fog, strobe lights, pyrotechnics and other special effects. For the safety of our performers and the comfort of those around you, the use of any photography, video recording device or any electronic equipment is prohibited.

Verandah Safety

Please do not leave any combustible materials on your balcony when not present in your stateroom for safety reasons.
DF/BD/7W/002/4.12/RD/©DISNEY

	8:30	8:45	9:00	9:15	9:30	9:45	10:00	10:15	10:30	10:45	11:00	11:15	11:30	11:45	12:00	12:15	12:30	12:45	1:00	1:15	1:30			
FUNNELVISION	Tinker Bell (G) FunnelVision					Pixar Shorts (G) FunnelVision					Movie Challenge Poolside FunnelVision													
MOVIES	Toy Story 3 (G) Buena Vista Theatre																							
CHARACTER	Donald Lobby Atrium		Chip & Dale Lobby Atrium		Mickey Lobby Atrium		Pluto Dk 4, Midship		Donald Lobby Atrium		Tinker Bell Lobby Atrium		Phineas & Ferb Lobby Atrium		Goofy Lobby Atrium									
FUN FOR ALL AGES	Wake Up With Disney Jr. D Lounge		Walking Ship Tour Meet at Preludes								Bingo Pre Sales		Kick Start Jackpot D Lounge		Family Crafts - Scrapbooking D Lounge			The Quest D Lounge						
	Interdenominational Service Outlook			Disney Animation - Creating a Character D Lounge										Disney Vacation Club Presentation The Tube										
	Disney Vacation Club Member Celebration The Tube				Origami Flowers La Piazza				Jack Jack's Diaper Dash Lobby Atrium		Port & Shopping Show Buena Vista Theatre													
ADULTS	Friends of Bill W. Outlook					EPSON Dream Team Draft Day O'Gills Pub							Crafts - Tile Coasters O'Gills Pub		Club 18*21 Mix & Mingle Cove Cafe		70's Music Challenge O'Gills Pub							
ADULTS	Xbox Kinect® - Wipeout O'Gills Pub				Introduction to Acupuncture Seminar Outlook				Detox for Health & Weight Loss Outlook				Champagne Tasting (21+) Ooh La La (Fee Applies)			How to Increase Your Metabolism Outlook								
Vibe	Open House				Hangin in Vibe				Zombified				Hangin in Vibe											
Edge	Open House				Hangin in Edge				Magic Show				Hangin in Edge											
Oceaneer Lab																	Animation Cells							
Oceaneer Club			Memory Wall										Youth Lunch				Open House							
	<8:00 a.m.		Open House & Registration								Clubhouse Kids													
Out & About	Open House in Edge & Vibe																							

Symbol for activities that will be repeated during the cruise

FOLD

	1:45	2:00	2:15	2:30	2:45	3:00	3:15	3:30	3:45	4:00	4:15	4:30	4:45	5:00	6:15	6:30	6:45			
FUNNELVISION	Toy Story 2 (G) FunnelVision					The Emperor's New Groove (G) FunnelVision														
MOVIES	Tangled (PG) Buena Vista Theatre											Disney Nature: African Cats (PG) Buena Vista Theatre								
CHARACTER	Princess Gathering Lobby Atrium		Minnie Preludes				Minnie Lobby Atrium		Donald Dk 4, Midship		Mickey Dk 4, Midship									
FUN FOR ALL AGES	Anyone Can Cook D Lounge - Apple Strudel						Bingo Pre Sales		Senses Spa Jackpot D Lounge		Captain's Reception Lobby Atrium									
	Shuffleboard Tournament Deck 4, Port Side		Walt Disney Theatre										Fine Whines Live Lobby Atrium							
ADULTS	Behind the Scenes Presentation Buena Vista Theatre		Martini Tasting (21+) Ooh La La (Fee Applies)				Art of the Theme Show Tour Meet at Meridian													
ADULTS	Wine Tasting (21+) <1:30 pm Meridian (Fee Applies)		Live Guitar with Rob Thompson Satellite Falls		Longest Drive Golf Simulator		Group Cycling Senses Fitness Center		18*21 Giant Jenga O'Gills Pub											
Vibe					Dive into DJ'ing															
Edge					Dodgeball															
Oceaneer Lab	Animation Cells																			
Oceaneer Club	Open House								Youth Dinner											
Out & About	Hold the Phone Meet at Deck 2, Midship		Fitness Frenzy Senses Fitness Center (Fee Applies)																	

Fold along the dotted lines and take me with you so you don't miss any of the fun!

OUT & ABOUT SERIES

	7:00	7:15	7:30	7:45	8:00	8:15	8:30	8:45	9:00	9:15	9:30	9:45	10:00	10:15	10:30	10:45	11:00	11:15	11:30	11:45	12:00	
FUNNELVISION	High School Musical (G) FunnelVision					Remember the Titans (PG) FunnelVision																
MOVIES	Disney Nature: African Cats (PG) Buena Vista Theatre											War Horse (PG-13) Buena Vista Theatre >12:41 a.m.										
CHARACTER	Minnie Lobby Atrium		Goofy Preludes		Mickey Dk 4, Midship		Minnie Preludes		Donald Dk 4, Midship		Pluto Preludes		Mickey Dk 4, Midship		Minnie Lobby Atrium							
FUN FOR ALL AGES	Captain's Reception Lobby Atrium						Formal Night After Party D Lounge		Family Superstar Karaoke													
	David Williamson The Tube		Walt Disney Theatre						Live Music with Fine Whines Lobby Atrium													
ADULTS	Family Superstar Karaoke					Piano After Dark La Piazza		Buckets N Boards The Tube		Rock The Tube with Guest DJ Cide The Tube												
ADULTS	Live Piano with Charlie Reuter La Piazza					Club 18*21 Mixer O'Gills Pub		50 Movie Quotes Trivia O'Gills Pub		Live Guitar with Rob Thompson O'Gills Pub												
Vibe	Smoothie Hour				Pump It up till 11:00 pm				ESPN Dream Team Draft Day				Mirror, Mirror									
Edge	That's Hilarious!				Mirror, Mirror																	
Oceaneer Lab																						
Oceaneer Club	Wii Challenge																					
					Crafts Galore				Movie Time													
Out & About	Table Tennis Tournament Meet at Deck 13, Aft																					

IN THE SPOTLIGHT SERIES

SOLVE IT! SERIES

JUMP UP! SERIES

CREATE & INVENT SERIES

CLUBHOUSE SERIES

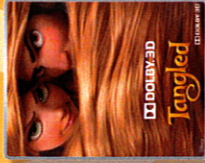
STORYBOOK SERIES

SUNDAY, APRIL 15, 2012 - DAY AT SEA

BUENA VISTA THEATRE



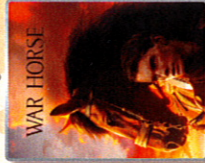
9:00 a.m.
Run Time: 1 hr 43 mins
Rating: G



3:15 p.m.
Run Time: 1 hr 40 mins
Rating: PG



5:45 & 8:15 p.m.
Run Time: 1 hr 29 mins
Rating: PG



10:15 p.m.
Run Time: 2 hrs 26 mins
Rating: PG-13

Character Appearances

- DONALD DUCK**
Lobby Atrium - 9:15 a.m.
Lobby Atrium - 10:15 a.m.
- MINNIE MOUSE**
Deck 4, Midship, Balcony - 5:15 p.m.
Deck 4, Midship, Balcony - 8:15 p.m.
- CHIP AND DALE**
Deck 4, Midship, Balcony - 9:30 a.m.
Deck 4, Midship, Balcony - 10:30 a.m.
- TINKER BELL**
Lobby Atrium - 9:30 a.m.
Lobby Atrium - 10:30 a.m.
- MICKEY MOUSE**
Lobby Atrium - 9:45 a.m.
Deck 4, Midship, Balcony - 5:45 p.m.
Deck 4, Midship, Balcony - 7:45 p.m.
Deck 4, Midship, Balcony - 9:45 p.m.
- PLUTO**
Deck 4, Midship, Balcony - 10:00 a.m.
Preludes - 9:30 p.m.
- GOOFY**
Deck 4, Midship, Balcony - 11:00 a.m.
Preludes - 7:30 p.m.
- MINNIE MOUSE**
Preludes - 2:30 p.m.
Lobby Atrium - 4:45 p.m.
Preludes - 5:45 p.m.
Lobby Atrium - 7:15 p.m.
Preludes - 8:00 p.m.
Lobby Atrium - 10:15 p.m.
- PRINCESS GATHERING**
Lobby Atrium - 1:45 p.m.



For details of daily Disney character appearances refer to the character line on your Navigator Grid, or the digital character board in the Lobby Atrium.

YOUTH ACTIVITIES THEMED EXPERIENCES

- CLUBHOUSE SERIES**
focuses on movement and features content which appeals to younger children.
- STORYBOOK SERIES**
is designed with a strong connection to the Disney classic stories.
- JUMP UPI SERIES**
includes large ground games & movement-oriented activities.
- CREATE & INVENT SERIES**
will have a tactile focus allowing children to create and admire their work.
- IN THE SPOTLIGHT SERIES**
focuses on children's stage presence with lots of activities and enthusiasm.
- SOLVE IT! SERIES**
are less active, but will challenge children with problem/solutions-based activities.
- OUT & ABOUT SERIES**
Set outside secured Youth Activities spaces, very active, appealing to Tweens. Recommended 8 - 14 years

SHIP DIRECTORY

YOUTH ACTIVITIES	
DISNEY'S OCEANEER CLUB	8:00 A.M. - 12:00 A.M.
DISNEY'S OCEANEER LAB	9:00 A.M. - 12:00 A.M.
EDGE	10:00 A.M. - 1:00 A.M.
IT'S A SMALL WORLD NURSERY	9:00 A.M. - 11:30 P.M.
VIBE	10:00 A.M. - 2:00 A.M.
ENTRANCE DECK 4, FWD	
RECREATION	
AQUADUCK	9:00 A.M. - 10:00 P.M.
AQUALAB	9:00 A.M. - 7:00 P.M.
DONALD'S POOL	6:00 A.M. - 11:00 P.M.
GOOFLY GOLF	8:00 A.M. - 10:00 P.M.
GOLF SPORTS SIMULATORS	9:00 A.M. - 6:00 P.M.
GOOFLY'S SPORTS DECK	8:00 A.M. - 6:00 P.M.
MICKEY'S POOL	6:00 A.M. - 11:00 P.M.
MICKEY'S SLIDE	9:00 A.M. - 6:00 P.M.
MIDSHIP DETECTIVE AGENCY	DECKS 2 & 5, Mid
NEMO'S REEF	9:00 A.M. - 7:00 P.M.
PORT ADVENTURES DESK	DECK 5, Mid
QUIET COVE POOL	DECK 11, Fwd
SATELLITE FALLS	DECK 13, Fwd
SENSES FITNESS CENTER	DECK 11, Fwd
GENERAL INFORMATION	
ARR-CADE	DECK 11, Aft
DISNEY VACATION CLUB	2:30 P.M. - 10:00 P.M.
FUTURE CRUISE SALES DESK	DECK 4, Mid
GUEST SERVICES	DECK 3, Mid
MEDICAL HEALTH CENTER	DECK 1, Fwd
PORT & SHOPPING DESK	DECK 4, Mid
PRELUDES	DECK 3, Fwd
SENSES SPA AND SALON	DECK 11, Fwd
SHUTTERS PHOTO GALLERY	DECK 4, Mid
SHUTTERS DIGITAL	DECK 4, Mid
24 HOURS	
BIBBIDI BOBBIDI BOUTIQUE	DECK 5, Mid
MICKEY'S MAINSAIL	DECK 3, Fwd
QUACKS	10:00 A.M. - 4:00 P.M.
SEA TREASURES	9:00 A.M. - 11:00 P.M.
VISTA GALLERY	DECK 4, Mid
WHITECAPS	9:00 A.M. - 11:00 P.M.
WHOZITS & WHATZITS	DECK 11, Mid
	1:00 P.M. - 4:00 P.M.

DINNER MENU
Animator's Palate: Pacific Rim
Enchanted Garden: Continental Market
Royal Court: French Dinner
Dining Times: 5:45pm & 8:15pm

OF THE DAY DRINK
Maui Tiki (Alcoholic)
Coco Boli (Non-Alcoholic)

WEATHER FORECAST
Sunday: Partly Cloudy
High: 75°F/24°C
Monday: Partly Cloudy
High: 77°F/25°C

Evening Attire: Formal Attire

DINING & LOUNGES

BREAKFAST

CABANAS CONTINENTAL	DECK 11, Aft	7:00 A.M. - 7:30 A.M.
CABANAS	DECK 11, Aft	7:30 A.M. - 10:45 A.M.
ENCHANTED GARDEN	DECK 2, Mid	9:00 A.M. - 10:45 A.M.
ROYAL COURT	DECK 3, Mid	8:00 A.M. - 9:30 A.M.

LUNCHEON

CABANAS	DECK 11, Aft	12:00 P.M. - 2:15 P.M.
ENCHANTED GARDEN	DECK 2, Mid	12:00 P.M. - 1:30 P.M.
FILLMORE'S FAVORITES	DECK 11, Mid	11:00 A.M. - 6:00 P.M.
LUIGI'S PIZZA	DECK 11, Mid	11:00 A.M. - 6:00 P.M.
ROYAL COURT	DECK 3, Mid	12:00 P.M. - 1:30 P.M.
TOW MATER'S GRILL	DECK 11, Mid	11:00 A.M. - 11:00 P.M.

DINNER

ANIMATOR'S PALATE	DECK 3, Aft	5:45 P.M. & 8:15 P.M.
ENCHANTED GARDEN	DECK 2, Mid	5:45 P.M. & 8:15 P.M.
ROYAL COURT	DECK 3, Mid	5:45 P.M. & 8:15 P.M.
CABANAS TABLE SERVICE	DECK 11, Aft	6:30 P.M. - 8:30 P.M.

LATE NIGHT SHARKS

LA PIAZZA (18+)	DECK 4, Aft	10:45 P.M. - 11:45 P.M.
LUIGI'S PIZZA	DECK 11, Mid	9:30 P.M. - 12:30 A.M.

ADDED FEATURES

BEVERAGE STATION	DECK 11, Mid	24 HOURS
EYE SCREAM	DECK 11, Mid	11:00 A.M. - 11:00 P.M.
ROOM SERVICE	DIAL O	24 HOURS

ENTERTAINMENT - LOUNGES - BARS

Adults must be 21 and older to consume alcoholic beverages.

BON VOYAGE	DECK 3, Mid	9:00 A.M. - 11:00 P.M.
COVE BAR (18+)	DECK 11, Fwd	10:00 A.M. - 10:30 P.M.
COVE CAFE (18+)	DECK 11, Fwd	7:00 A.M. - 12:00 MID.
CURRENTS (18+)	DECK 13, Fwd	10:00 A.M. - 11:00 P.M.
D LOUNGE	DECK 4, Mid	SHOW TIMES
FROZONE	DECK 11, Mid	11:00 A.M. - 11:00 P.M.
LA PIAZZA	DECK 4, Aft	12:30 P.M. - 12:00 MID.
MERIDIAN (18+)	DECK 12, Aft	5:00 P.M. - 12:00 MID.
O'GILLS PUB	DECK 4, Aft	1:00 P.M. - 12:00 MID.
O'OH LA LA (18+)	DECK 4, Aft	5:00 P.M. - 12:00 MID.
OUTLOOK	DECK 14, Mid	
SKYLINE (18+)	DECK 4, Aft	5:00 P.M. - 12:00 MID.
THE TUBE (18+)	DECK 4, Aft	10:00 P.M. - 2:00 A.M.
VISTA CAFE	DECK 4, Mid	7:30 A.M. - 10:00 P.M.
WAVES	DECK 12, Aft	10:30 A.M. - 6:30 P.M.

Consumers who order raw or partially cooked, ready-to-eat food of animal origin, are hereby informed that the food is not sufficiently cooked to ensure its safety.

MUPPETS

There's a Muppet mystery onboard, and Pepe needs YOU to search the ship for clues

and use our special detective "badge" to catch the culprit!



9:00 a.m. - 9:00 p.m.
Decks 2 & 5, Midship

Fire/Security: 7-3001
Medical/Emergency: 7-3000
Health Center: 7-1923

IMPORTANT NUMBERS